

Coral Beliefs

BY JILL KRUTICK

Exhibiting Artist

FEBRUARY 23 – AUGUST 6, 2023

OPENING RECEPTION: 5 – 7 P.M. | JUNE 9, 2023

“Jill’s interpretation of this unseen world is magical and remarkable, yet fragile and in great risk of peril... Jill’s work embodies the Park’s mission of bringing people to art in nature.”

— Bryan Knicely, Executive Director, Pyramid Hill Sculpture Park & Museum



Jill Krutick surrounded by Coral Beliefs in her studio with Buzz in 2022. Photo by Jay Cohen.

ABOUT JILL KRUTICK

Layer upon layer of oil and acrylic, swirls and curls, dripping squares, radiant amoebas, splashes of energy and a rush of color, subtle and lyrical portrayals of the heaven and the earth and the sea, Jill Krutick’s paintings present a 21st Century iteration of Abstract Expressionism. Jill Krutick has been a full-time artist since 2010, yet she has already garnered six museum exhibitions on two continents. Krutick is a most unusual, even radical, artist in that she is equally analytical and creative. She was a media executive and a top-ranked equity analyst on Wall Street. Prior to leaving the corporate world and committing to her art practice full time, she was Fortune Magazine’s #1 Entertainment Analyst in 2001. The energy, talent and perception that created success in the business world have refocused on mark making that is both rhapsodic and conversational, expressing her passion for the environment and visionary imagination. Along with being a master colorist, employing hues that can be supersaturated or pastel, Jill Krutick is fervent in her use of texture. As a pianist/artist, some of Krutick’s paintings are operas, some are pop songs, and some are sheer jazz, but all are memorable and anything but atonal. Krutick paints in her Westchester, New York studio with her Old English Sheepdogs.

 JSKFINEART

 IN/JILLKRUTICK

 @JILLKRUTICKFINEART

FOR MORE INFORMATION

To learn more about *Coral Beliefs*, you can find full essays, interviews, and video content online at jillkrutickfineart.com using this QR code.



JILL KRUTICK FINE ART

425 MOUNT PLEASANT AVENUE,
MAMARONECK, NEW YORK, 10543

T: 914.522.0420
E: JSK@JILLKRUTICKFINEART.COM

WWW.JILLKRUTICKFINEART.COM



PYRAMID HILL
SCULPTURE PARK & MUSEUM

1763 HAMILTON CLEVES ROAD
HAMILTON, OHIO 45013

T: 513. 868-1234
E: PYRAMID@PYRAMIDHILL.ORG

WWW.PYRAMIDHILL.ORG

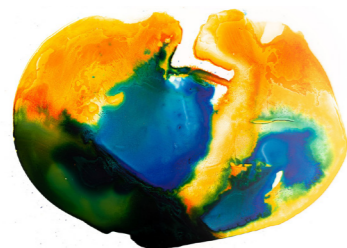
Studio photography by Jess Paternoster. Brochure design by Simone Kurtz.



Detail shot of Coral Beliefs: Textured, 2022.

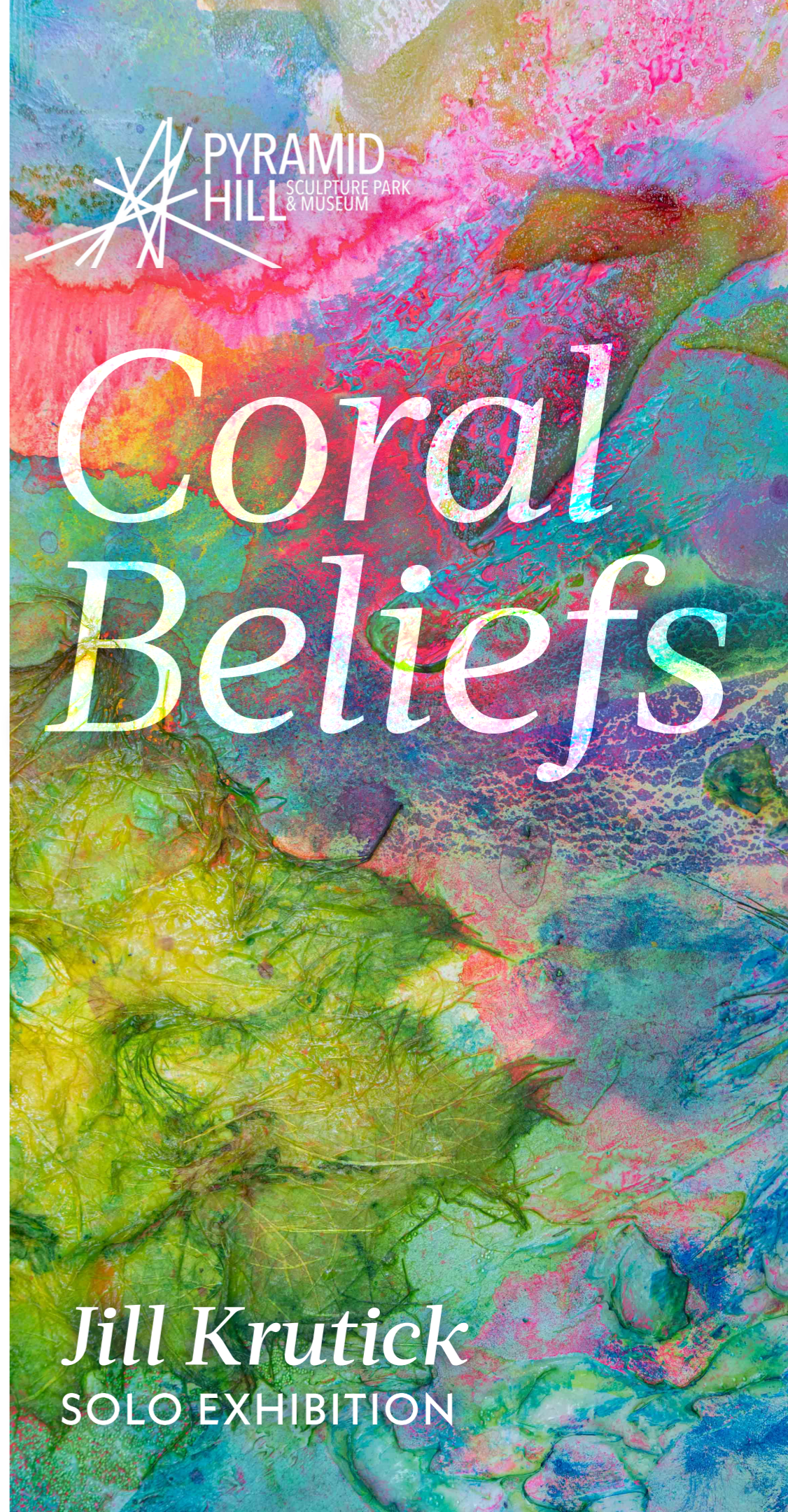
The exquisite beauty and the unprecedented tribulations faced by coral reefs around the world today are the driving force for this nearly 85-foot long monumental work. Through the interplay of watercolors, oil paints, acrylic mediums, paper collage, and an assortment of plastic materials, Jill Krutick creates an immersive, three-dimensional viewer experience. Though the work is made up of 25 independent panels, all the panels are considered part of one artistic unit that offers a 360-degree lens into the underwater world.

More than just an eco-statement about the need to preserve this fragile eco-system, *Coral Beliefs* is a philosophy about connectivity and networking. Each panel is named a belief that Krutick has about life. The center of the installation is called *Fury* and the final panel is called *Elation*, giving a sense of the range of feelings that are presented.



Contours of the Earth: Aridification 8, 2021

The *Contours of the Earth* series examines the post-apocalyptic imagined shapes of the world after the effects of climate change. This watercolor-based series envisions the impact of melting ice caps, rising sea levels, and the drying of the land (aridification).



Jill Krutick
SOLO EXHIBITION

CORAL BELIEFS

BY JILL KRUTICK



Networking

Tranquility



Abundance

Nurture

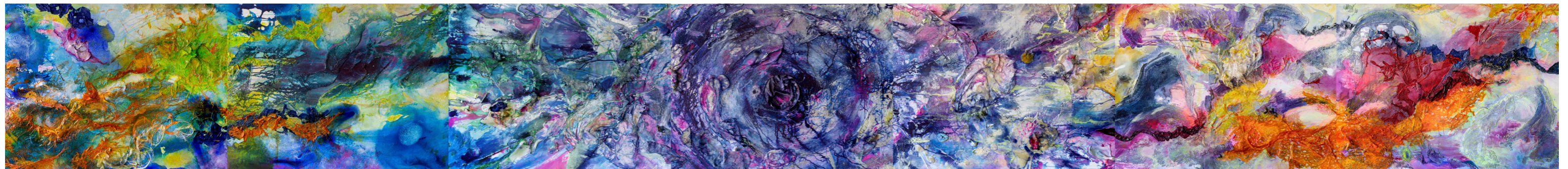
Quest

Fragility

Sublime

Spiritual

Harmonious



Textured

Mystery

Agitation

Fury

Torn

Turbulent

Blazing



Elegiac

Interactivity

Labyrinth

Congruence

Interdependent

Blooming

Enchantment



Epic

Elation

Full piece measures 1,005 x 30 inches (83.8 x 2.5 feet) and is made up of 25 panels. All mixed media panels measure 30 x 40 inches, except for *Fury* (30 x 45 inches).

Coral Beliefs is part of the *Coral Reef* series.