



I C E C U B E

JILL  
KRUTICK  
FINE  
ART



**Bubbles**, 2016, Oil on canvas,  
60 x 48 in.



**Ice Cube Lilac**, 2018, Oil on canvas,  
60 x 60 in.



**Ice Cube Black & Red**, 2016, Oil on canvas,  
60 x 60 in.



**Ice Cube Gothic**, 2018, Oil on canvas,  
30 x 30 in. *Private collection.*



**Ice Cube Small 2**, 2016, Oil on canvas,  
12 x 12 in.



**Blue Shutters 2**, 2014, Oil on canvas,  
48 x 36 in.



**Orchid**, 2018, Acrylic on canvas, 72 x 48 in.  
*Private collection.*



**Ice Cube Rectangle**, 2013, Oil on canvas, 36 x 60 in.

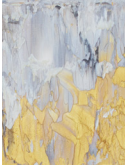


**Tie Dye**, 2014, Oil on canvas, 36 x 48 in.  
*Private collection.*

425 MOUNT PLEASANT AVENUE  
MAMARONECK, NY 10543



WWW.JILLKRUTICKFINEART.COM  
E: JSK@JILLKRUTICKFINEART.COM  
T: 914.522.0420



Reflections

## THE ICE CUBE SERIES

MELTING ADVERSITY

The Ice Cube Series represents the courageous process involved in overcoming personal challenges.

I often equate the use of geometric shapes to setting “boundaries” or, conversely, being “boxed in.” As a daughter, sister, mother, friend, and individual, I have confronted some trying times. Challenges that were, and are, chilling, but melt away when I persevere.

The molten gold in the middle represents the fire from within to overcome a battle that thaws the boundaries of the cube. The drips on the canvas symbolize the fragments of the obstacle that remain — the memories they left behind.

As art critic Donald Kuspit writes, “And of course an ice cube is a solid that becomes liquid — Krutick’s paintings are invariably liquid, that is, are always in the “flow,” to use the psychologist Mihaly Csikszentmihalyi’s term.” Art historian, Annette Blaugrund, calls the “Ice Cube pictures ... an interesting evolution of geometric forms suggestive of Mark Rothko’s rectangular fields of color.”

It is not a coincidence that my Ice Cube paintings highlight an equal sign. Equilibrium is essential for one to fairly and completely navigate through a problem. While the shape may appear “simple,” the canvas comes alive with the dynamic textures, shading, and embellishments with which I dress each work. Variety is the spice that defines each Ice Cube.

Over time, the Ice Cube shape has emerged as one of my artistic fingerprints — triumphantly expressing the human spirit through adversity.

### ABOUT THE ARTIST

Jill Krutick is a contemporary abstract expressionist whose paintings trace the artist’s joyful path of self-discovery and creative exploration. Using only texture, form, and color, the artist suggests the intense beauty and constant flux of nature: galaxies, skies, blossoms, and tides. Influenced by modern and contemporary masters such as Van Gogh, Monet, and Rothko, Krutick combines abstract expressionist gestures, impressionist luminosity, and personal symbols of change.

Krutick painted privately for over 30 years and studied at The Art Students League of New York. In 2010, she began exhibiting her work and by the end of the decade, she had two solo museum exhibitions: Coral Springs Museum of Art, Florida in 2019 and the Yellowstone Art Museum, Montana from 2019-2020. Krutick works full time as an artist at her studio in Westchester, New York and her work is in more than 100 public and private collections.

Explore Jill Krutick’s work at [jillkrutickfineart.com](http://jillkrutickfineart.com) and follow her on Instagram at [@jillkrutickfineart](https://www.instagram.com/jillkrutickfineart).



425 MOUNT PLEASANT AVE  
MAMARONECK, NY 10543

WWW.JILLKRUTICKFINEART.COM  
E: JSK@JILLKRUTICKFINEART.COM  
T: 914.522.0420

 JSKFINEART  
 @JILLKRUTICKFINEART  
 IN/JILLKRUTICK  
 @JILL\_KRUTICK